

Pozzani Pure Water Plc
 Warwick Road
 Fairfield Industrial Estate
 Louth
 Lincolnshire LN11 0YB
 Telephone: (01507) 608100
 Fax: (01507) 608090
 email: enquiries@pozzani.co.uk
 www.pozzani.co.uk



Water treatment products

POZZANI ICE-PACK UNDERSINK CHILLER

For domestic and office use

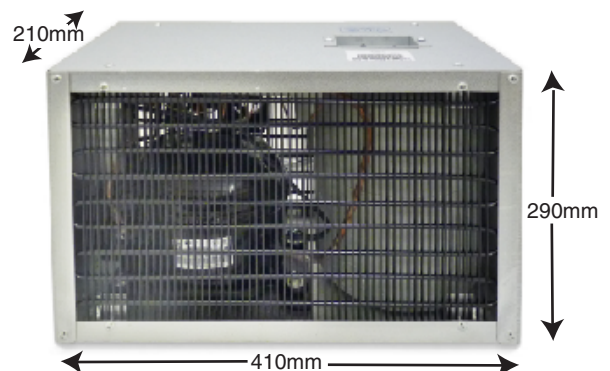
- Produces approximately 30 litres of chilled water per hour (at 21°C).
- Compact, light and quiet.
- Chilled water regulated by thermostat.
- Can be used with an existing water filter system.
- Easy and fast to install. Uses John Guest Speedfit fittings.
- Low power consumption means it is cost effective.
- Conforms to European standards & Directives - CE marked.
- Refrigerant contains 150 grams of HCFR-134a offering zero ODP (ozone depletion potential).

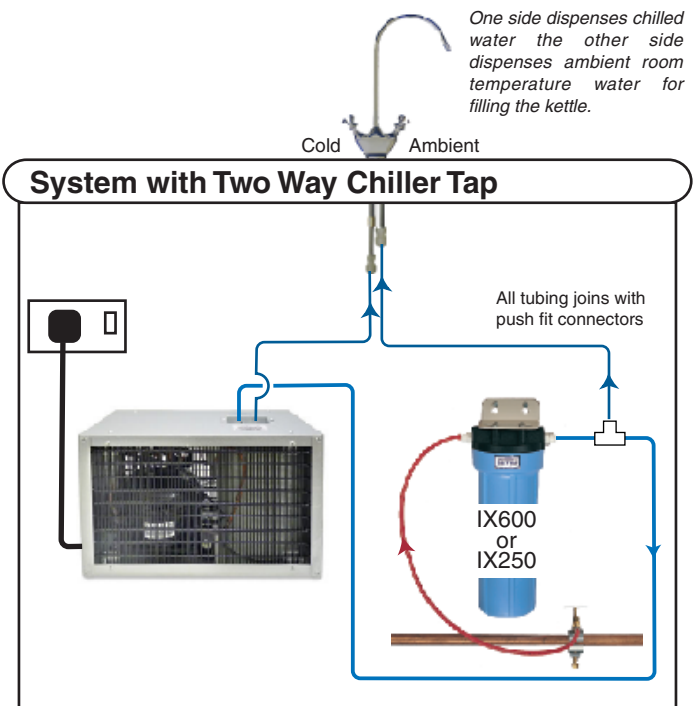
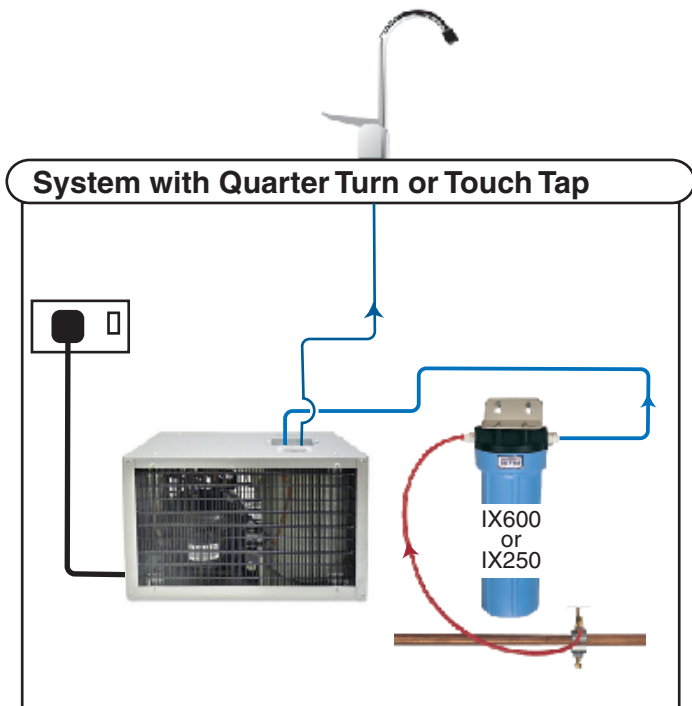


Above: Ice-Pack Chiller

Technical Specifications	
Capacity	30 litres of chilled water per hour (at 21°C)
Dry weight	12.5kg
Electrical consumption	120 watts
Max water pressure	620kPa / 90psi
Voltage	230v
Refrigerant type	R134a
Cabinet	High quality material with strong corrosion resistance
Cold water tank	Hygenic stainless steel. External refrigerant evaporator, mechanically wrapped around tank
Cold water thermostat	Controlled by adjustable thermostat, located at back of cabinet, to 35.6°F-53.6°F (2°C-12°C)
Refrigeration unit	Convection cooled condenser, internally spring mounted hermetically sealed compressor with automatic overload protector. Refrigerant is controlled by accurately calibrated capillary tube. Highly efficient cooling system
Warranty	One year on the sealed refrigeration system and most component parts

Dimensions





Installation Requirements:

- Allow machine to stand in an upright position for 2 hours before switching it on.
- Maximum water pressure at inlet 5 bar (75 psi). Where pressure exceeds 5 bar a pressure reducer must be fitted.
- Kitchen base unit needs to be over 800mm wide.
- Allow air to flow through a vent in the base and a vent in the top of the cabinet.
- Provide 75mm air gap on all sides of the cooler unit.
- **Do not** cover the unit.
- Ensure all connections are water tight.
- Ensure area is free from any spilt water before connecting the electrical supply to the cooler.

Maintenance:

- To maintain the quality of water, change the filter cartridge every 6 months.

Filtration Systems

KS IX250	KS IX600

Brochures available for further information

Taps: Brochures available for further information

Quarter Turn Tap					Two Way Chiller Tap	
	LTS-1012	LTS-1012-2	BTS-832	CLR-893		2BTS-832
	FTS-802	FTS-802-2	FTS-802-3	LLR-1023		2FTS-802

All Touch Taps are available with interchangeable regular or long reach spouts.

Touch Tap	Coloured Finishes		1 White	Metal Finishes		8 Polished Brass	
		5 Brown	6 Almond		9 Brushed Chrome	10 Brushed Nickel	11 Satin Nickel