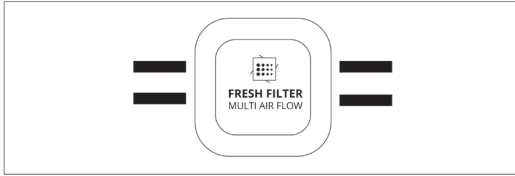
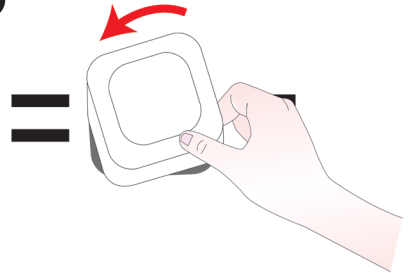


1



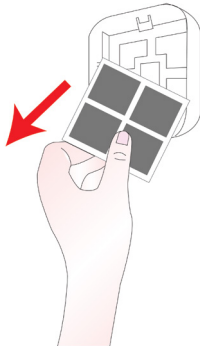
Look at the back of your refrigerator to locate your fresh air filter. It is in the centre of the refrigerator above the top shelf.

2



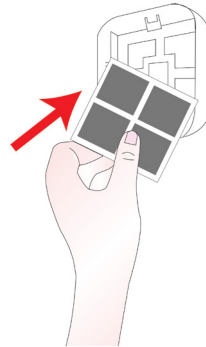
To remove the air filter cover from the refrigerator wall, twist the cover to the left.

3



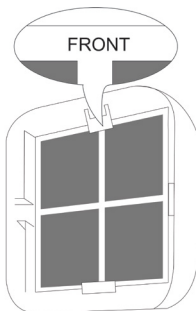
Remove and discard the old filter which is located on the inside of the filter cover.

4



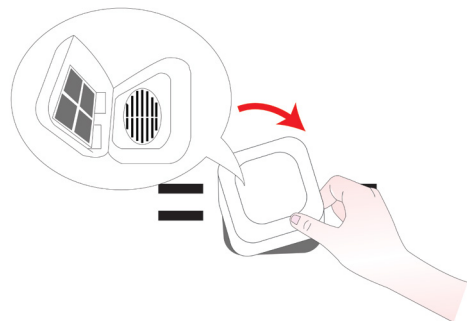
Insert the new filter into the inside of the cover.

5



Ensure the side with the text 'FRONT' faces outwards. Insert the air filter back into your refrigerator.

6



Twist the cover back to the right to re-attach it to the refrigerator wall. Reset the filter sensor by pushing and holding the air filter button.